

Before you start

Thank you for purchasing this TCP Smart Camera.

This is a quick start guide for you to get your device connected to our app and your home WiFi router device.

Before you get started you will need the following:

- A Smart device such as a mobile phone or tablet
- Access to the Google or Apple app store, log on and passwords
- The name of your WiFi network and password to your WiFi network
- Confirm your home WiFi router is set to 2.4 GHz and not 5 GHz.
- If you are unsure, please consult your broadband provider such as Virgin Media, BT or Sky for details on how to change your settings
- Turn off any WiFi extenders during set up
- Check you do not have any limitations of the number of devices with your broadband provider

The Smart Camera battery will have some charge. It is best to charge the Camera to 100% with the supplied Micro USB cable before you install it.

PLEASE NOTE: Our products do not work on 5 GHz only 2.4 GHz

For more detailed instructions on how to connect to Amazon Alexa / Google Home or use the different functionality please visit:
<https://www.tcpsmart.eu/how-to/>

The first step is to download the TCP Smart App from the Apple App store or from Google Play store. Search for "TCP Smart". The app is free to download.

If you have a QR scanner on your phone please Scan the QR code below.



Scan me for the
TCP Smart App



GB: For full instructions please go to the TCP smart website at the following link tcpsmart.eu/quick-start-instructions/

TCP hereby declares that the device is in compliance with the essential requirements and other relevant provisions of directives 2014/53/EU, 2009/125/EC and 2011/65/EU. Full declaration can be viewed at tcpi.eu



FR: Pour obtenir les instructions complètes, rendez-vous sur le site Web de TCP Smart via le lien suivant : tcpsmart.eu/quick-start-instructions/

TCP déclare par la présente que cet appareil est conforme aux exigences essentielles et aux autres dispositions pertinentes des directives 2014/53/UE, 2009/125/CE et 2011/65/UE.



DE: Die vollständige Anleitung finden Sie über den folgenden Link auf der Website von TCP Smart: tcpsmart.eu/quick-start-instructions/

TCP erklärt hiermit, dass das Gerät mit den wesentlichen Anforderungen und sämtlichen anderen Bestimmungen der Richtlinien 2014/53/EU, 2009/125/EG und 2011/65/EU konform ist.



ES: Para obtener instrucciones completas, visite el sitio web de TCP Smart en el siguiente enlace: tcpsmart.eu/quick-start-instructions/

Por la presente, TCP declara que el dispositivo cumple los requisitos básicos y otras disposiciones pertinentes de las Directivas 2014/53/UE, 2009/125/CE y 2011/65/UE



NL: Ga voor instructies naar de website van TCP Smart via de volgende link: tcpsmart.eu/quick-start-instructions/

TCP verklaart hierbij dat het apparaat voldoet aan de essentiële vereisten en andere relevante bepalingen uiteengezet in de richtlijnen 2014/53/EU, 2009/125/EC en 2011/65/EU.



PT: Para instruções completas, aceda ao website da TP Smart através da ligação seguinte: tcpsmart.eu/quick-start-instructions/

A TCP declara que o dispositivo está em conformidade com os requisitos essenciais e outras disposições relevantes das diretivas 2014/53/UE, 2009/125/CE e 2011/65/UE.



SV: Se fullständiga instruktioner på TCP Smarts webbplats på adressen tcpsmart.eu/quick-start-instructions/

TCP förklarar härmed att enheten är i överensstämmelse med de grundläggande kraven och andra relevanta bestämmelser i direktiven 2014/53/EU, 2009/125/EG och 2011/65/EU.

TCP Smart



Smart Camera Outdoor Quick start guide

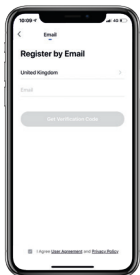
①



Once the app has downloaded select Register from the opening screen. You will then be presented with a Privacy Policy.

Please read and agree if you are happy to proceed.

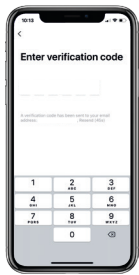
②



On the registration page enter your details and continue by pressing the get verification code button.

Ensure the service agreement has been read and the box is ticked.

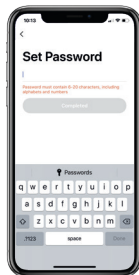
③



You have 60 seconds to enter the verification code which would have been sent to your email.

If this time expires go back to the registration page and re-enter your details.

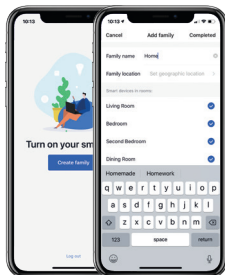
④



Set a Password. This password must contain 6-20 characters, and include a combination of letters and numbers.

Once entered press complete.

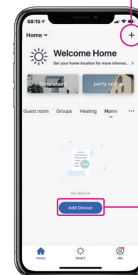
⑤



Create a family for your devices, this can be anything you wish. You can select rooms you wish to have in your family.

You can also enable your location which is useful for location apps. Press completed in the right hand corner.

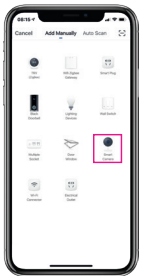
⑥



The Home page within the app is now ready to add your Smart devices.

Do this by either pressing the + button in the top right hand corner or pressing 'Add device'.

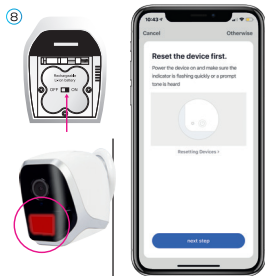
⑦



A list of different types of Smart devices will now be listed for you to select from.

Select Smart Camera from the list.

⑧

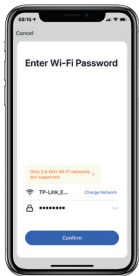


Turn the Smart Camera on using the switch at the base, the red light under the lens will flash rapidly.

(If this does not happen using the reset pick hold down the reset button until it does).

Continue to the next stage once it is flashing.

⑨

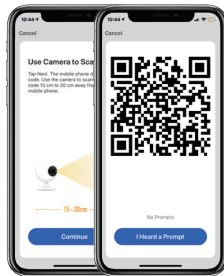


Choose your WiFi network & enter your password to connect.

If you are unsure of your details please check with your broadband provider.

Press the ok button to connect to your device.

⑩



The QR code on your screen will need to be scanned. Press continue and place your Smart device in front of the Smart Camera between 15 to 20 cm away. You should hear a beep, press the Heard The Beep button. If the device does not beep press the Heard Nothing At All button and follow the on screen steps.

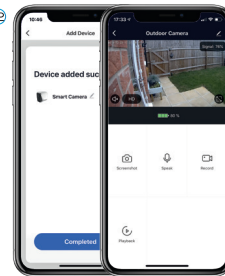
⑪



Your Smart Camera will start the connection process. The device will stop blinking and the connection wheel will reach 100%. (If this does not happen please see trouble shooting).

Fit the magnetic mounting plate to your wall using the supplied fittings.

⑫



Once the Smart Camera is connected, it can be renamed to suit your needs.

Once your Camera has been renamed press completed.

Your Camera is now ready to use and can be connected to the magnetic mount.