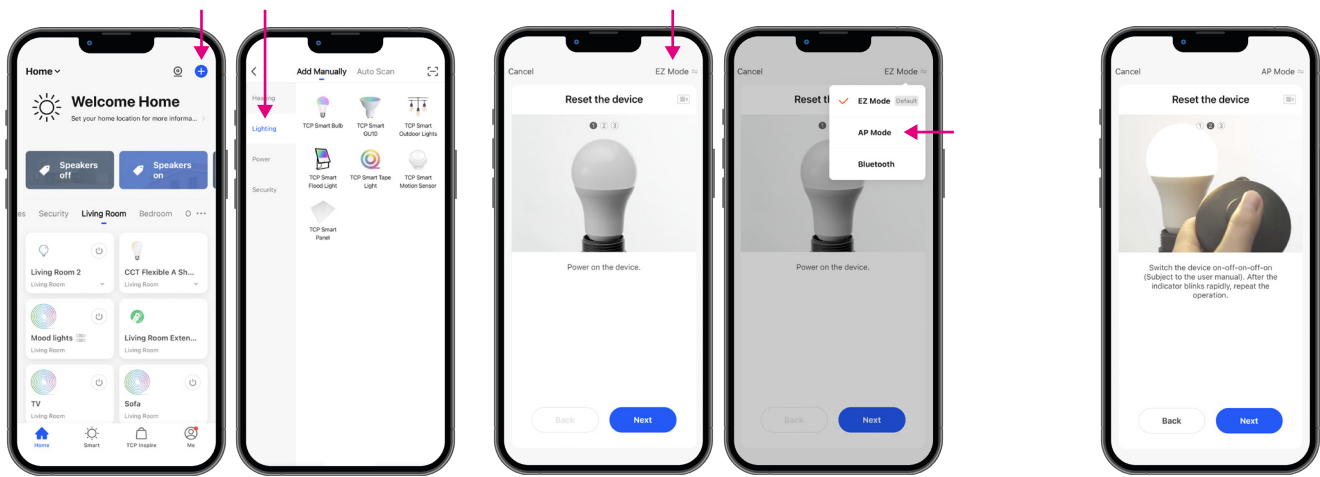




TCP Smart AP Mode Instructions
Lighting

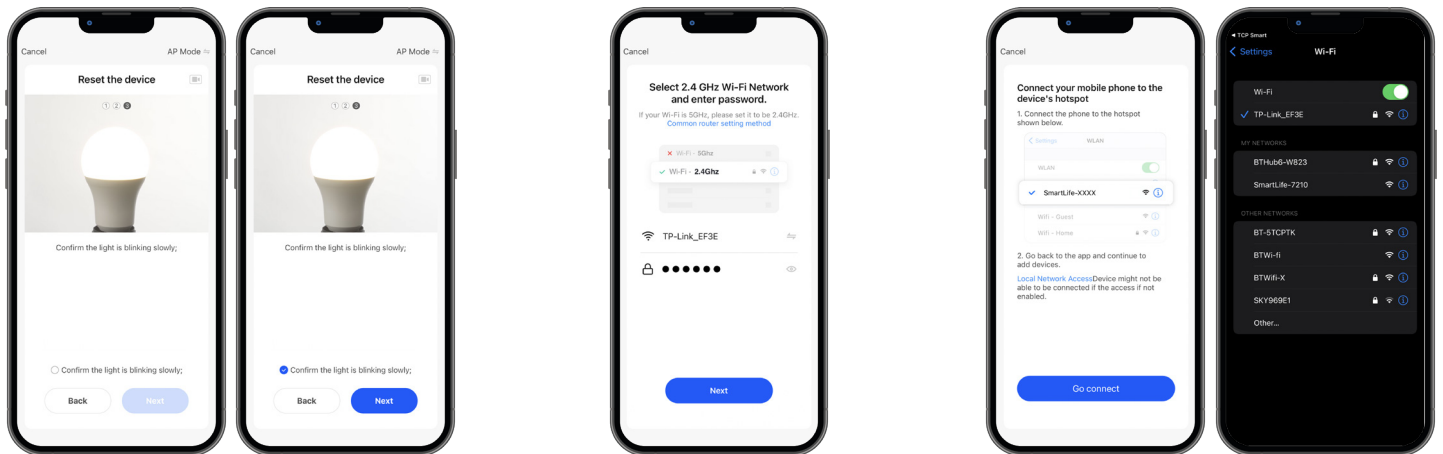


On the home screen press the blue ADD DEVICE icon (+). Select the LIGHTING group from the menu and the type of lighting you want to set up.

Click EZ MODE & select AP MODE from the menu & click next.

If not already fitted you should fit your light now. Once fitted your light should start to flash quickly, click next.

If the bulb does not flash quickly, turn it off for 10 seconds, then turn it back on & off 3 times. (ON-OFF, ON-OFF, ON-OFF, ON).



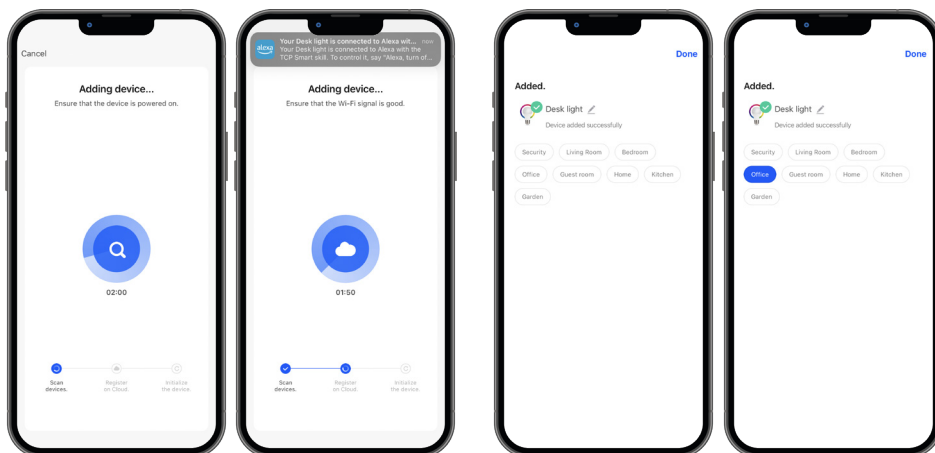
Now that your light is flashing quickly the light needs to be put into AP Mode. Do this by turning the bulb off & back on again 3 times (OFF-ON, OFF-ON, OFF-ON).

Choose your WiFi network, enter your password & click NEXT.

Click the GO CONNECT button to connect directly to your light. Choose SMART LIFE from the list of available networks.

Once selected return to the TCP Smart App.

The lights should now be flashing slowly. Click NEXT.



Wait a few moments for your light to be added.

Your lights are now connected. You can rename & choose a room in which they are fitted.

To finish click DONE. Your lights can now be used within the TCP Smart App.